

• **SFM-1224B(03/12)**

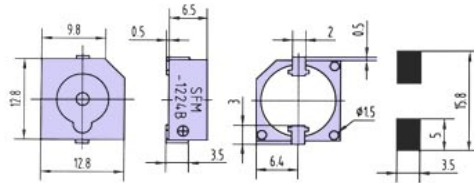


FEATURES:

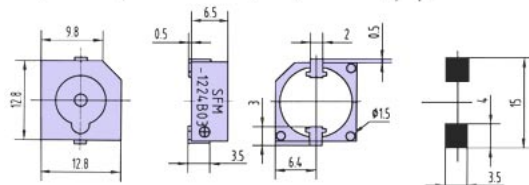
- SMD Type
- Can Endure Re-flow Solder Process

DIMENSIONS: (Unit: mm)

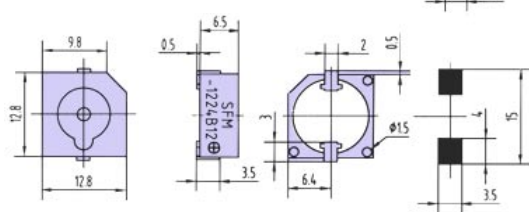
SFM-1224B :



SFM-1224B03 :



SFM-1224B12 :

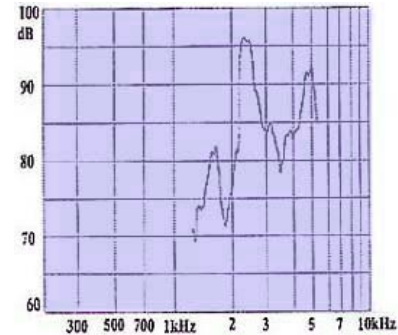


CHARACTERISTICS:

SFM-1224B :



SFM-1224B12 :



ELECTRICAL SPECIFICATIONS :

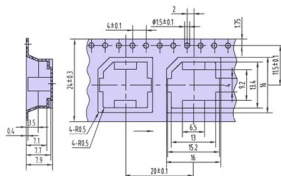
Model No.	SFM-1224B	SFM-1224B03	SFM-1224B12
Min . Sound Pressure Level (dB)	87 /5V _{DC} /10cm	83 /3V _{DC} /10cm	87 /12V _{DC} /10cm
Rated Voltage (V _{DC})	5	3	12
Operating Voltage (V _{DC})	4 ~ 7	2 ~ 5	8 ~ 16
Resonant Frequency (Hz)	2400	2400	2400
Rated Current (mA)	40 /5V _{DC}	70 /3V _{DC}	40 /12V _{DC}
Coil Resistance (Ω)	45 ± 5	16 ± 4	140 ± 14
Operating Temperature (°C)	-30 ~ 85	-30 ~ 85	-30 ~ 85
Storage Temperature (°C)	-40 ~ 85	-40 ~ 85	-40 ~ 85
Case Material /Colour	PPS /Grey	PPS /Grey	PPS /Grey
Weight (g)	2	2	2

PACKING INFORMATION:

TAPE TYPE INFORMATION:

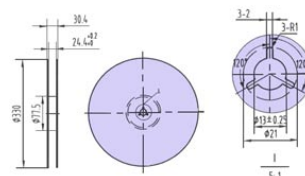
The design for such tape packing was executed under standard IEC -286-3

The material of the tape is polystyrene in black color. detailed dimensions are as below:



DIMENSIONS OF THE ROLLING PLATE:

The material of the rolling plate is in paper;
The dimensions of the rolling plate are as below:



PACKING DIMENSIONS AND QUANTITY:

- The rolling plate is put into a 340X335X35mm inner packing box and is packed with 450 pcs of the transducer per plate.
- The dimension of the outer carton is 400X350X350mm containing 10 inner boxes with a total quantity of 4,500 pcs of the transducer.
- The total gross weight per carton is 13.0Kgs, while net weight is 7.0Kgs.