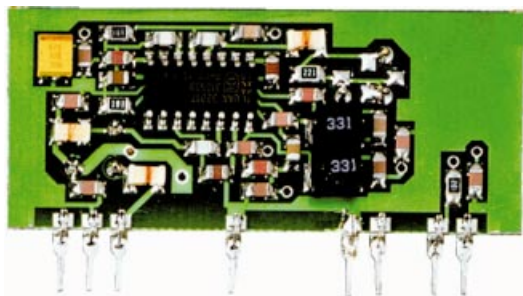


RRS1-XXX

AM Superhet Receiver With SAW Front End Filter



General description

The RRS1-XXX is an AM superhet data receiver with SAW front end filter.

IF Frequency: 500KHz

Typical sensitivity: -100dBm (2.2uVrms)

Supply current: 3.7 mA (typ)

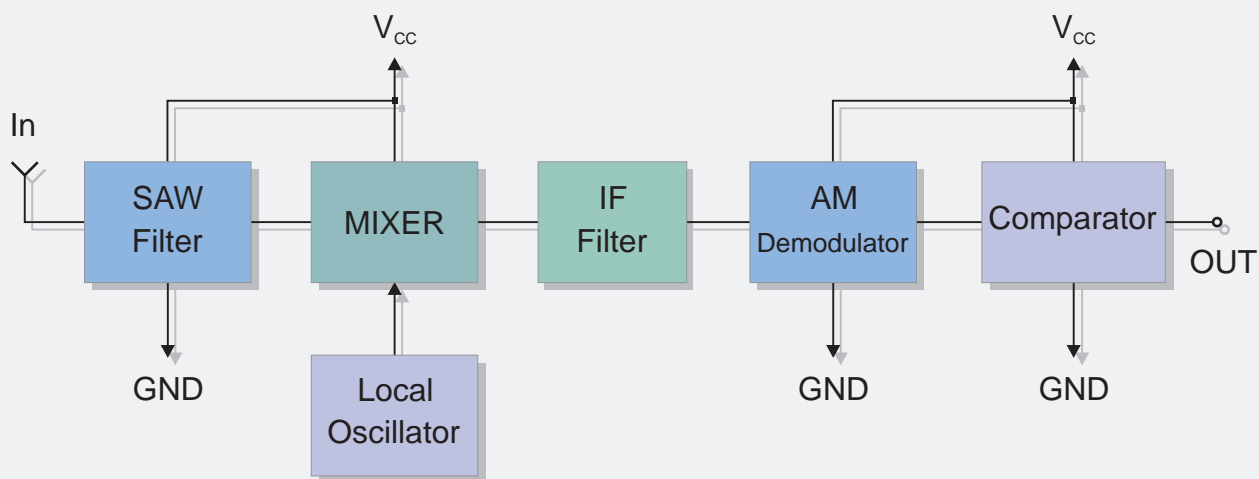
I-ETS 300 220 Compliance

XXX: custom-specified working frequency
(315, 418, 433.92 MHz)

Applications

- Wireless security systems
- Car Alarm systems
- Remote gate controls
- Sensor reporting

BLOCK DIAGRAM



Electrical Characteristics

Ta = 25°C unless otherwise specified

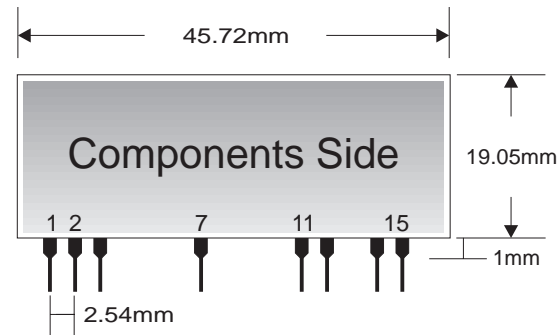
CHARACTERISTICS		MIN	TYP	MAX	UNIT
V _{cc}	Supply Voltage	4.5	5	5.5	VDC
I _s	Supply Current		3.7	5	mA
F _R	Receiver Frequency		315/418/433.92		MHz
F _{IF}	IF Frequency		500		KHz
	Max Data Rate			3	KHz
	RF Sensitivity (100% AM)*		-100		dBm
	Level of Emitted Spectrum		-65	-60	dBm
V _{ol}	Low-Level Output Voltage (I=-200uA)			0.6	V
V _{oh}	High-Level Output Voltage (I=10uA)	V _{cc} - 0.5			V
T _{OP}	Operating Temperature Range	-25		+80	°C

* Best Performances are obtained utilizing a transmitted coding with a DC average value independent of the data content (BiPhase Manchester coding)

Pin Description

1	V _{cc}	9	NC
2	GND	10	NC
3	IN	11	GND
4	NC	12	V _{cc}
5	NC	13	NC
6	NC	14	OUT
7	GND	15	V _{cc}
8	NC		

Mechanical Dimensions



TYPICAL APPLICATION

