

# PRODUCT DRAWING

CUSTOMER NO.:

FILENAME:

REVISION: C

## DRAWING OF TIC33

ORIGINAL DATE: 25 MAR 2004

TOTAL PAGES: 4

INITIATE

REVISE

EFFECTIVE DATE:

### REVISIONS

REV	DESCRIPTION	DATE
A	Change pintable.	01 APR 2004
B	Change the length of pin and operating voltage.	20 AUG 2004
C	Mark in current consumption and life time.	21 AUG 2004

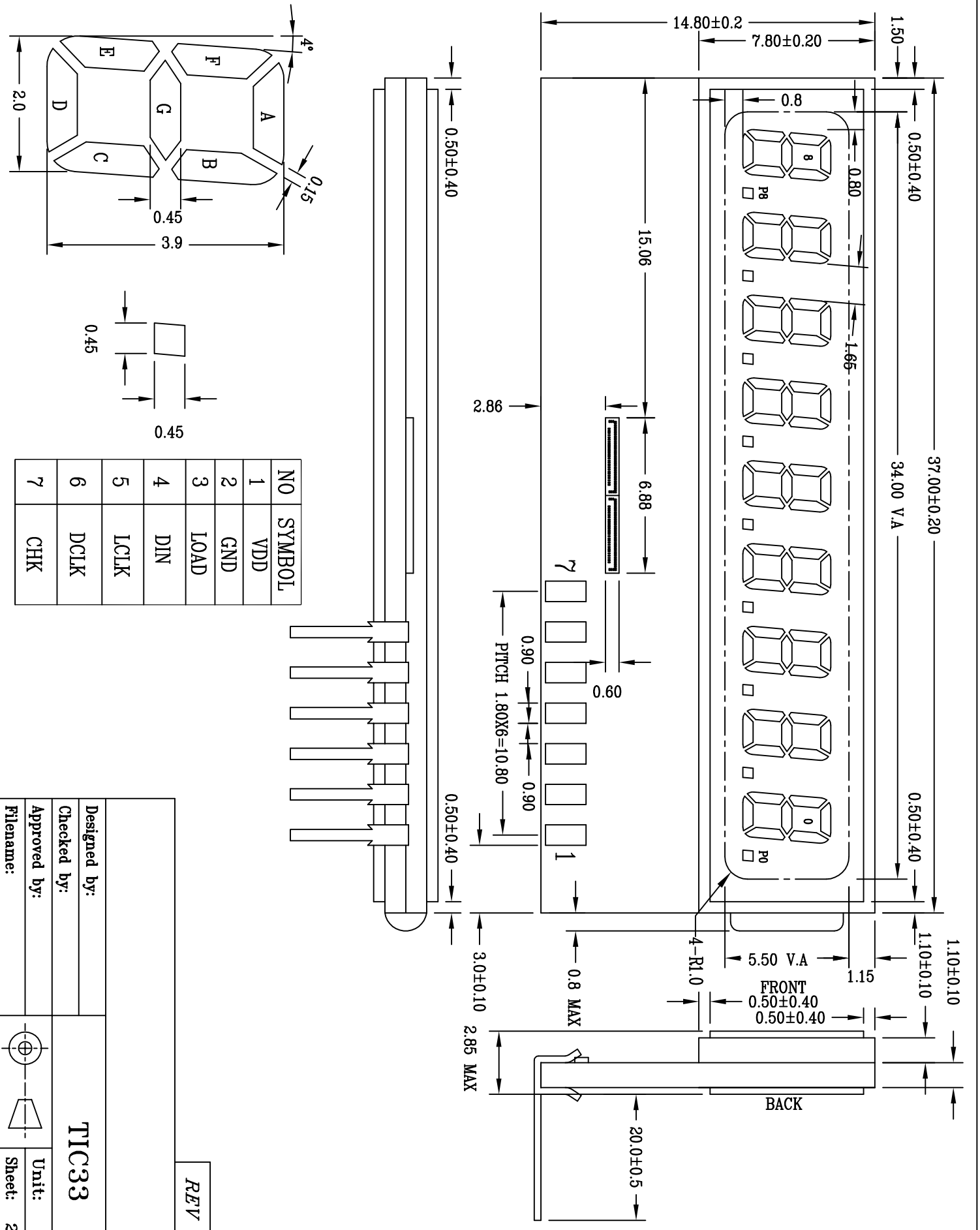
ORIGINATOR

DESIGN MGR.



Please sign and fax back this page to confirm this drawing.  
Please indicate if you need samples.

-----  
Authorized Signatures

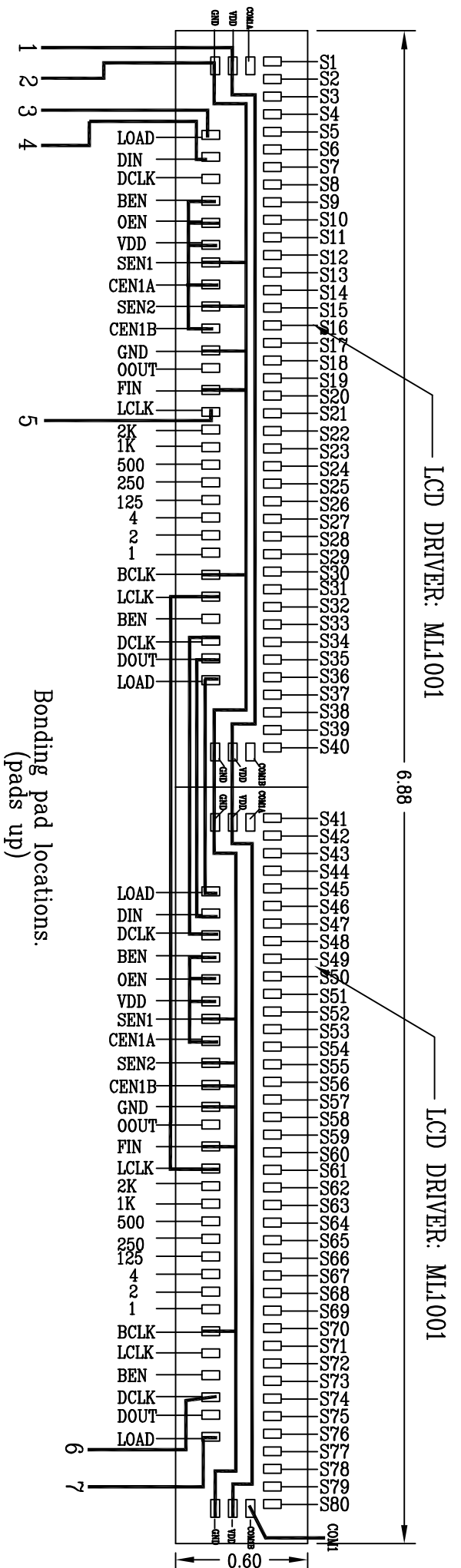


NO	SYMBOL
1	VDD
2	GND
3	LOAD
4	DIN
5	LCLK
6	DCLK
7	CHK

Designed by:	<b>TIC33</b>	Unit: mm
Checked by:		Sheet: 2 OF 4
Approved by:		
Filename:		

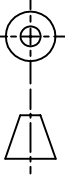
REV	C
-----	---



PIN	S1	S2	S3	S4	S5	S6	S7	S8	S9	S10	S11	S12	S13	S14	S15	S16	S17	S18	S19	S20
COM1	P0	0B	0G	0C	0D	0E	0F	0A	P1	1B	1G	1C	1D	1E	1F	1A	P2	2B	2G	2C
PIN	S21	S22	S23	S24	S25	S26	S27	S28	S29	S30	S31	S32	S33	S34	S35	S36	S37	S38	S39	S40
COM1	2D	2E	2F	2A	P3	3B	3G	3C	3D	3E	3F	3A	P4	4B	4G	4C	4D	4E	4F	4A
PIN	S41	S42	S43	S44	S45	S46	S47	S48	S49	S50	S51	S52	S53	S54	S55	S56	S57	S58	S59	S60
COM1	P5	5B	5G	5C	5D	5E	5F	5A	P6	6B	6G	6C	6D	6E	6F	6A	P7	7B	7G	7C
PIN	S61	S62	S63	S64	S65	S66	S67	S68	S69	S70	S71	S72	S73	S74	S75	S76	S77	S78	S79	S80
COM1	7D	7E	7F	7A	P8	8B	8G	8C	8D	8E	8F	8A								

REV C

Designed by:	
Checked by:	
Approved by:	
Filename:	
<b>TIC33</b>	
Unit:	mm
Sheet:	3 OF 4



A. Dimensions:

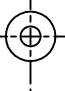

- 1. Length of top glass: 37.00±0.20 mm
- Width of top glass: 7.80±0.20 mm
- 2. Length of bottom glass: 37.00±0.20 mm
- Width of bottom glass: 14.80±0.20 mm
- 3. Thickness of LCD(max): 2.85 mm
- 4. Thickness of glass: 1.10 mm
- Top: 1.10 mm
- Bottom: 1.10 mm
- 5. Length of viewing area: 34.00 mm
- Horizontal: 34.00 mm
- Vertical: 5.50 mm

B. Display specification:

- 1. Duty: STATIC
- 2. Bias:
- 3. Operating voltage: 2.5-3.5V
- 4. Viewing angle: 12:00
- 5. Temperature:
- Operating: -20 TO +70°C
- Storage: -30 TO +80°C
- 6. Polarizer:
- Top: TRANSMISSIVE
- Bottom: REFLECTIVE
- 7. End seal: RIGHT
- 8. Length of pin: 20.00 mm
- Pitch of pin: 1.80 mm
- 9. Current consumption: 1uA
- 10. LCD life time: >12 year

REV	C
-----	---

Designed by:		TIC33	
Checked by:			
Approved by:			
Filename:			

		Unit: mm
		Sheet: 4 OF 4